

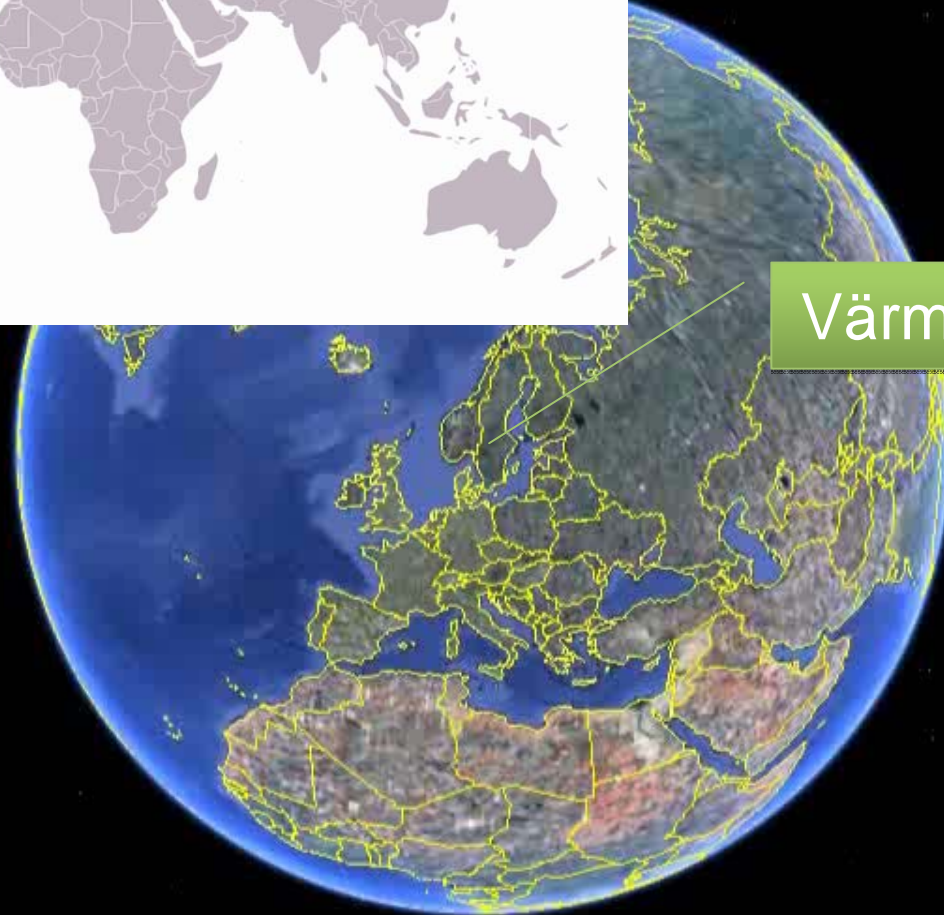
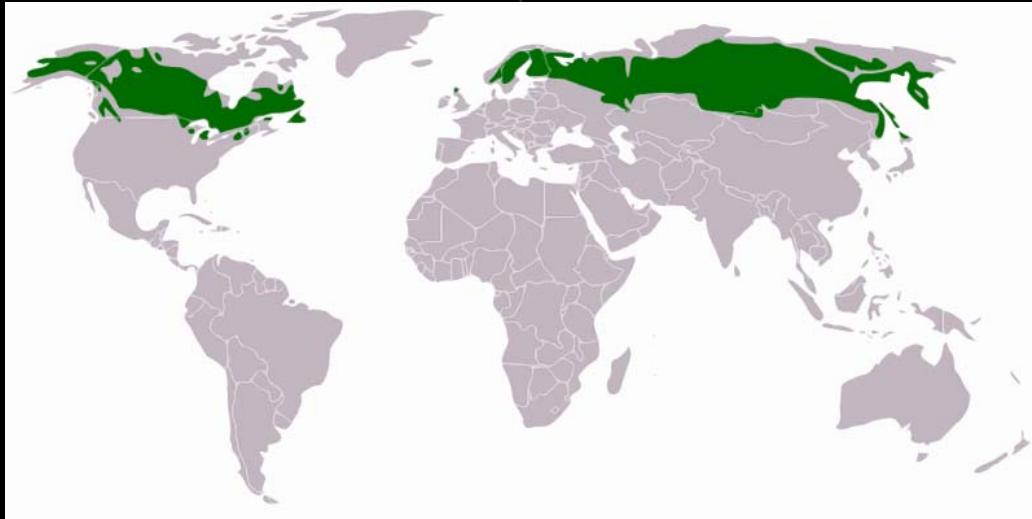


# The role of HEI in regional development

**Anders Olsson**  
**Region Värmland**

**Håkan Spjuth**  
**Karlstads universitet**





Värmland







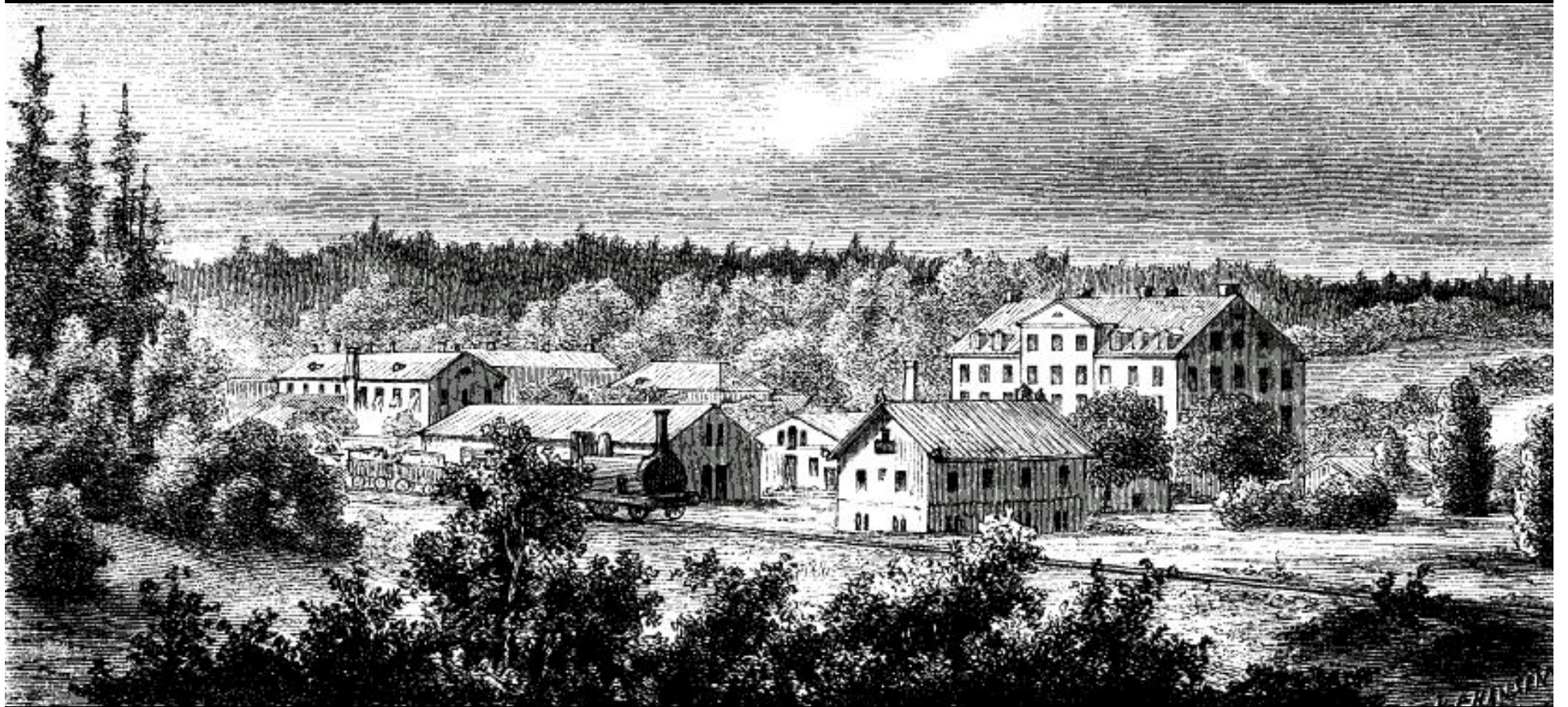


[www.regionvarmland.se](http://www.regionvarmland.se)

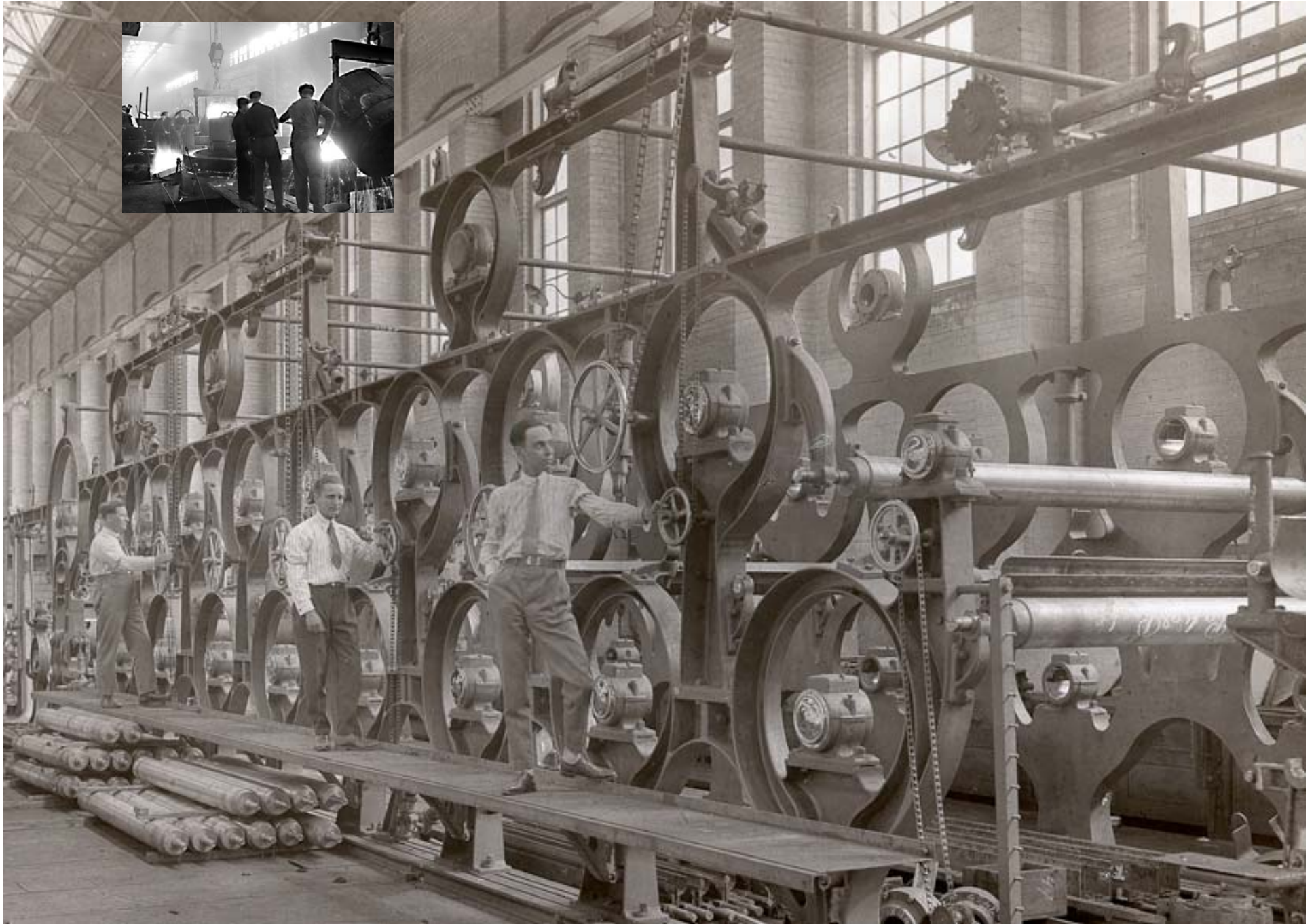












# The Paper Province



1999



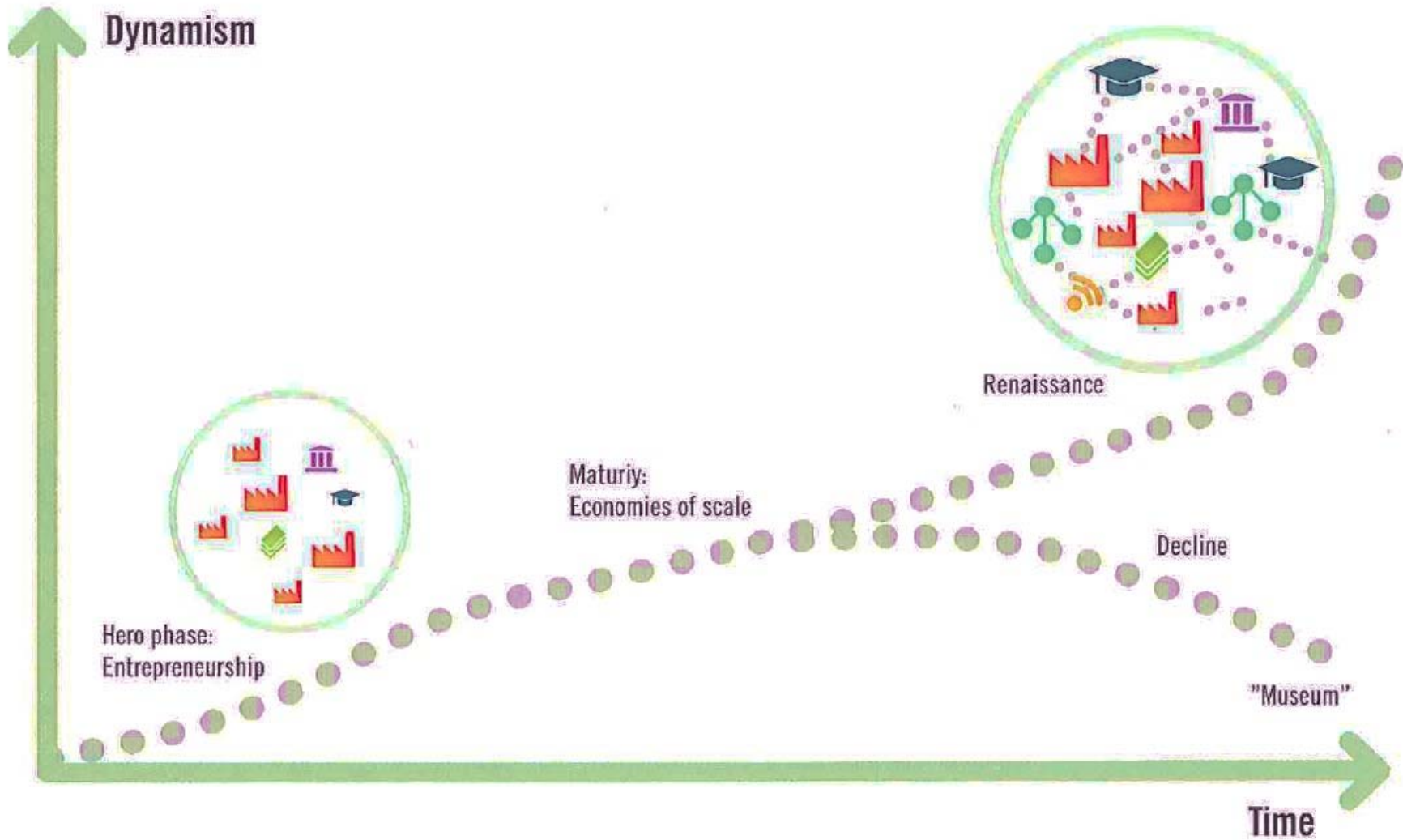


Figure 19. The Cluster Life Cycle

The Paper Province



THE CLUSTER OF  
PULP & PAPER TECHNOLOGY

A EUROPEAN WORLD-CLASS CLUSTER

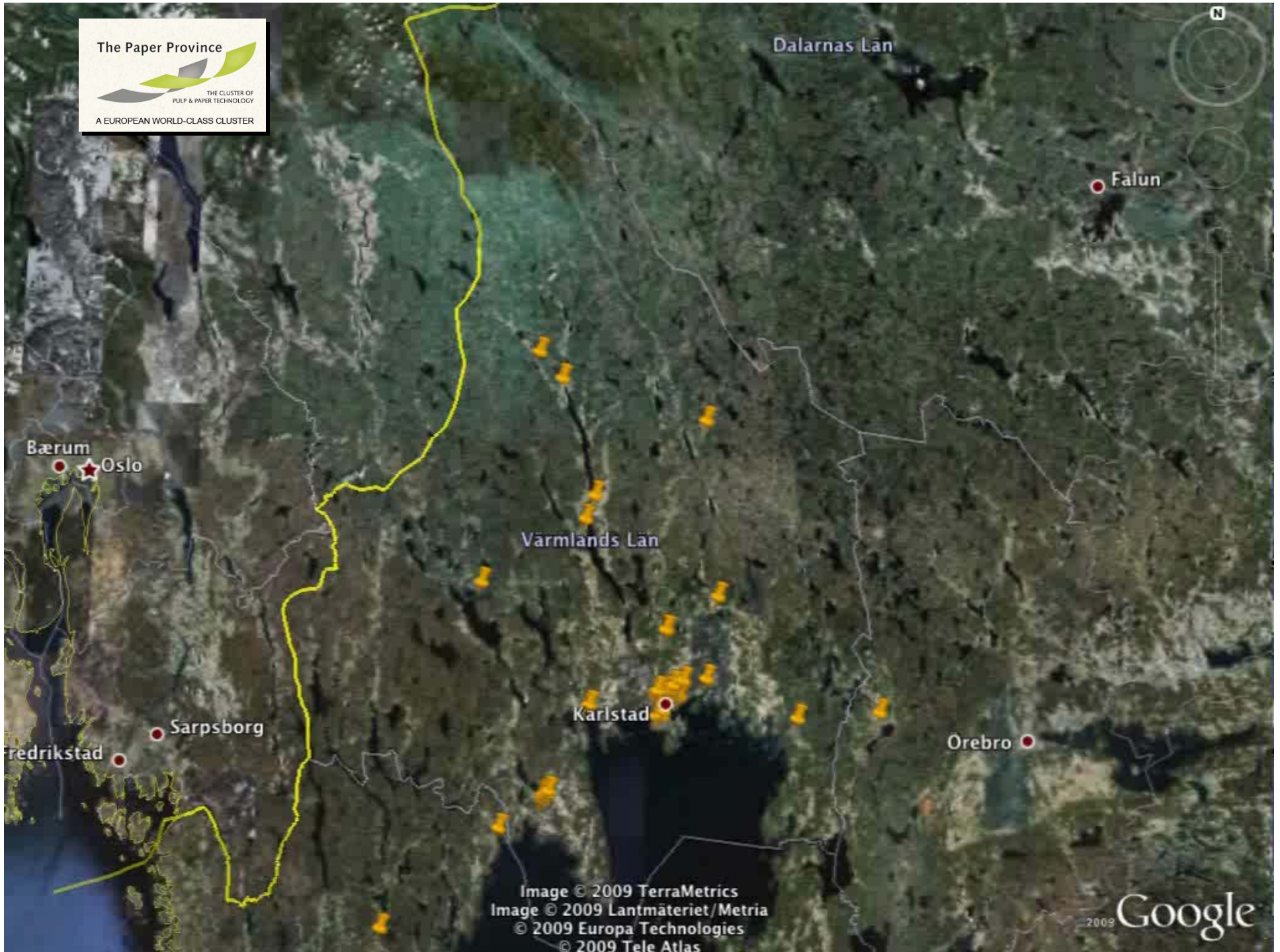


Image © 2009 TerraMetrics  
Image © 2009 Lantmäteriet/Metria  
© 2009 Europa Technologies  
© 2009 Tele Atlas

2009 Google











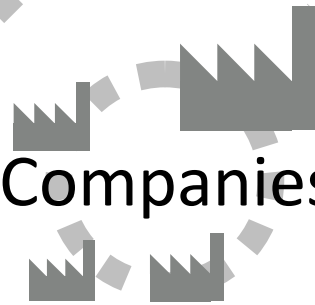
# Actors in a cluster

Government



Research organisations

Companies



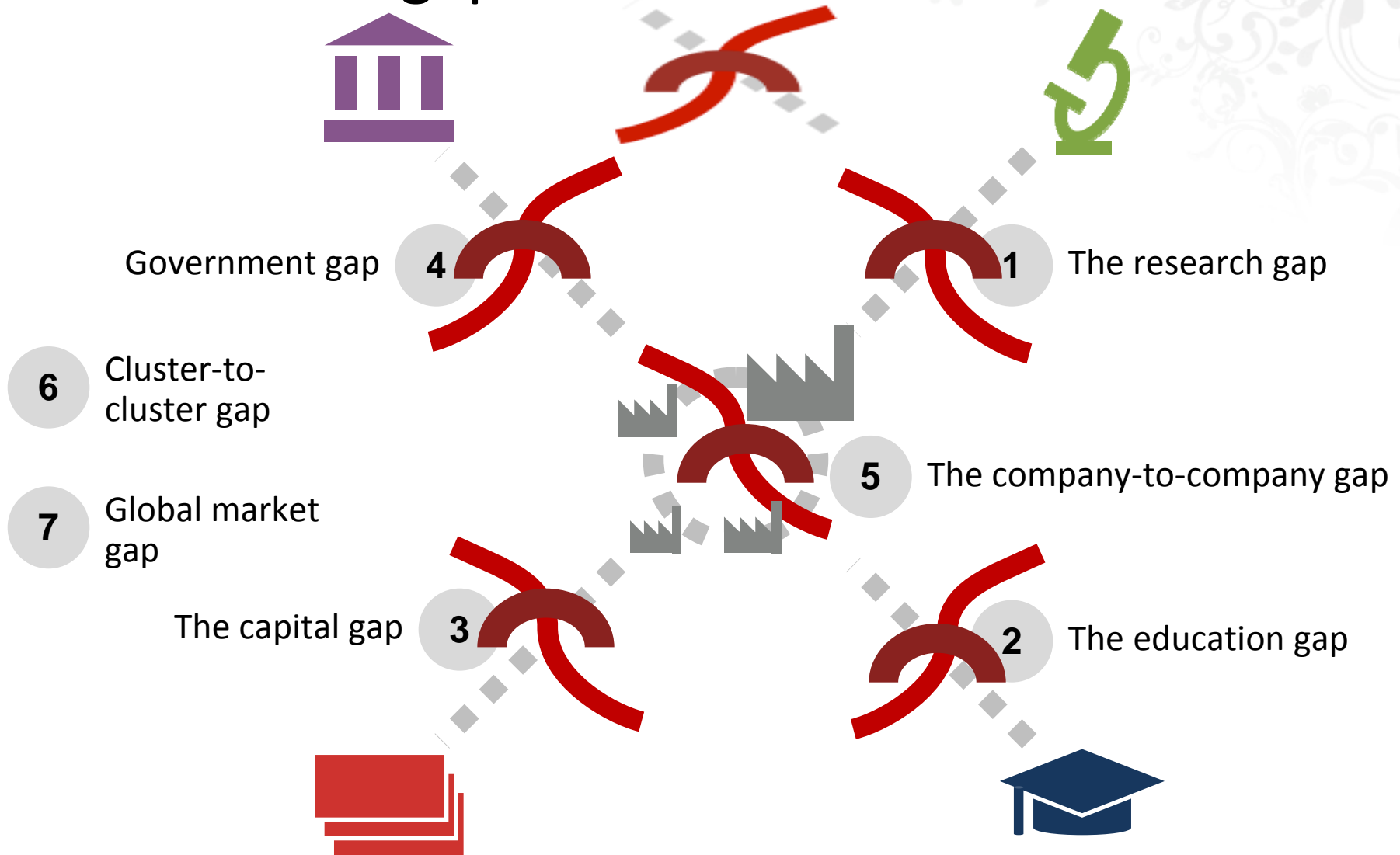
Capital providers



Education organisations

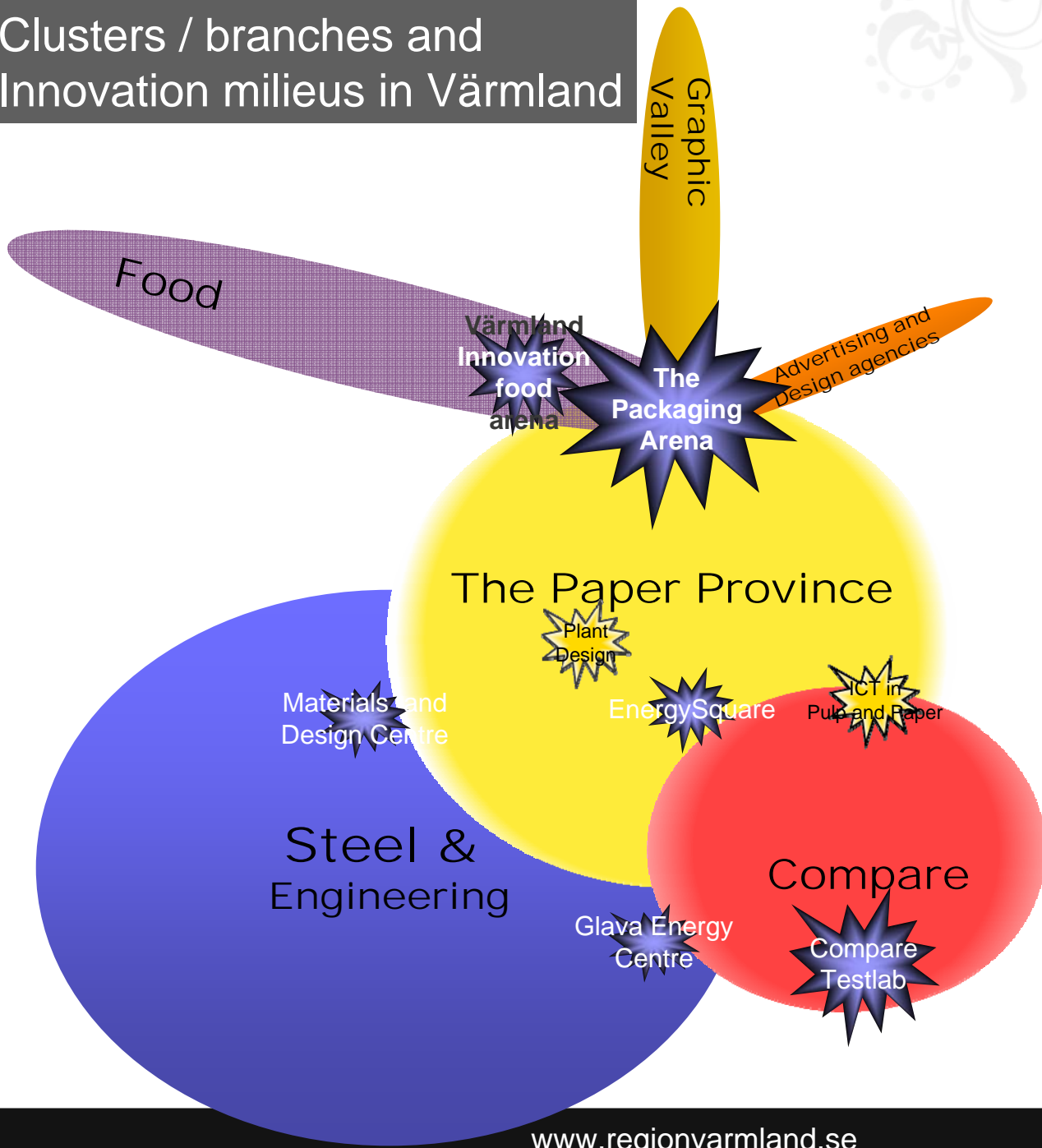


# The seven gaps of innovation



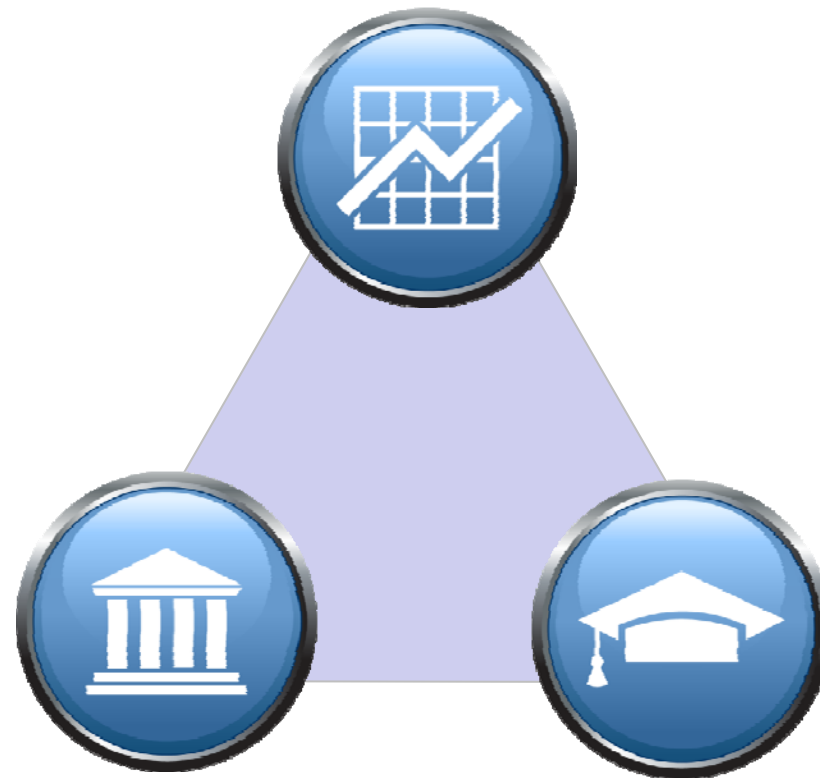


# Clusters / branches and Innovation milieus in Värmland





Business Sector



Public Sector

Higher Education Institutions





# OECD 14-Region Study 2004 - 2007

*Higher Education and the Regions: Globally Competitive, Locally Engaged*

Värmland one of 14 regions in 12 countries  
Final conference in Valencia 2007



The OECD program for Institutional Management in Higher Education (IMHE)

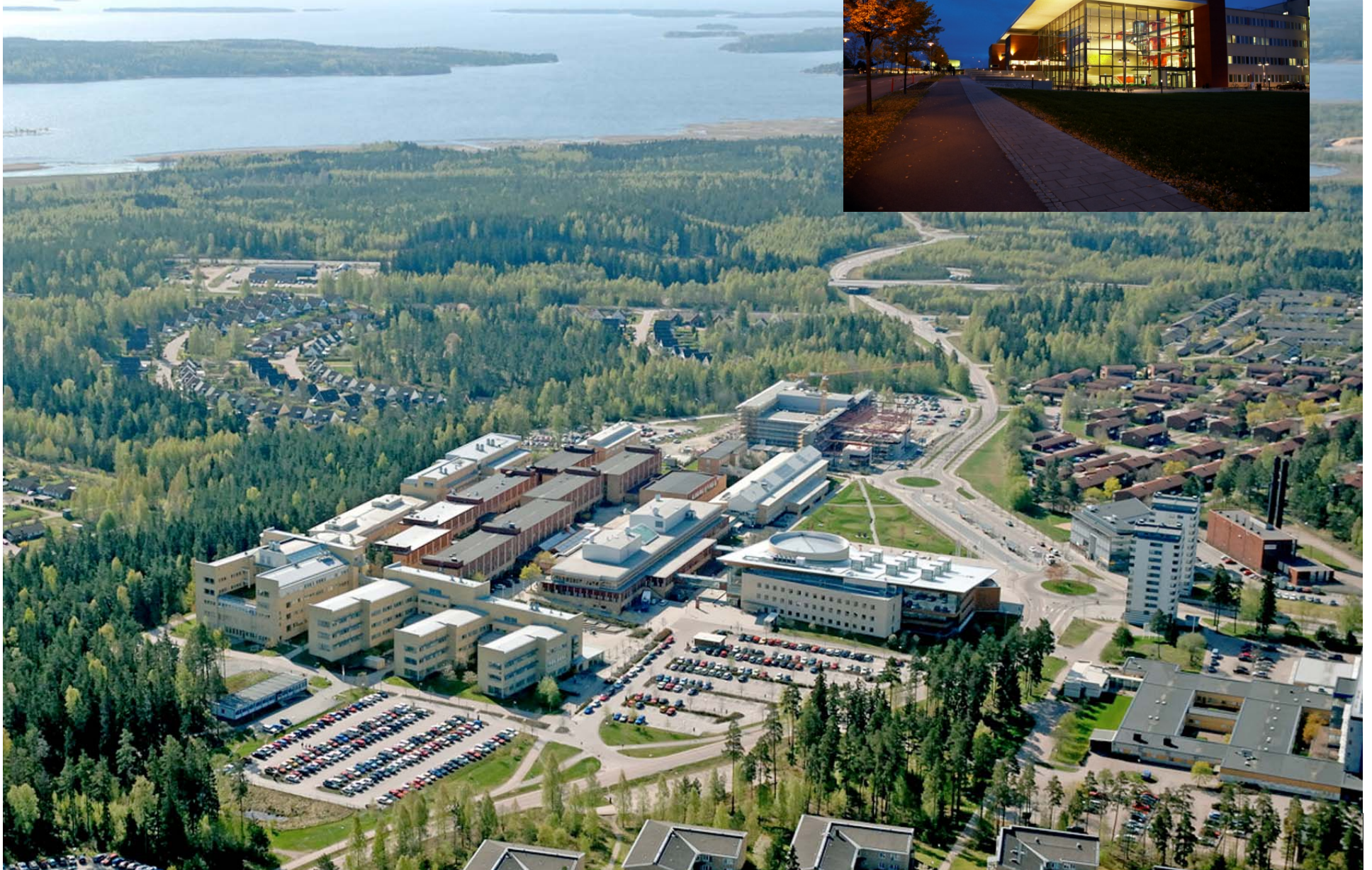


- 
- 
- Dare to focus
  - Form a forum for politicians, researchers and the business sector concerning the economic and political future of the region – and make the decisions necessary to secure the region's future development.
  - Form a shared vision with prioritised strategies for Värmland
  - Focus even more on the innovative clusters within the region
  - Form a R&I contract between Region Värmland and Karlstad University with the innovative clusters development in mind.
  - Form a regionally owned risk capital foundation.
  - Upgrade the regional infrastructure to secure workforce mobility.
  - Region Värmland should form its organisation and policies in accordance with these recommendations.





**KARLSTADS UNIVERSITET**



Tradition (long..) of collaborative projects

But

In a strategic way ?



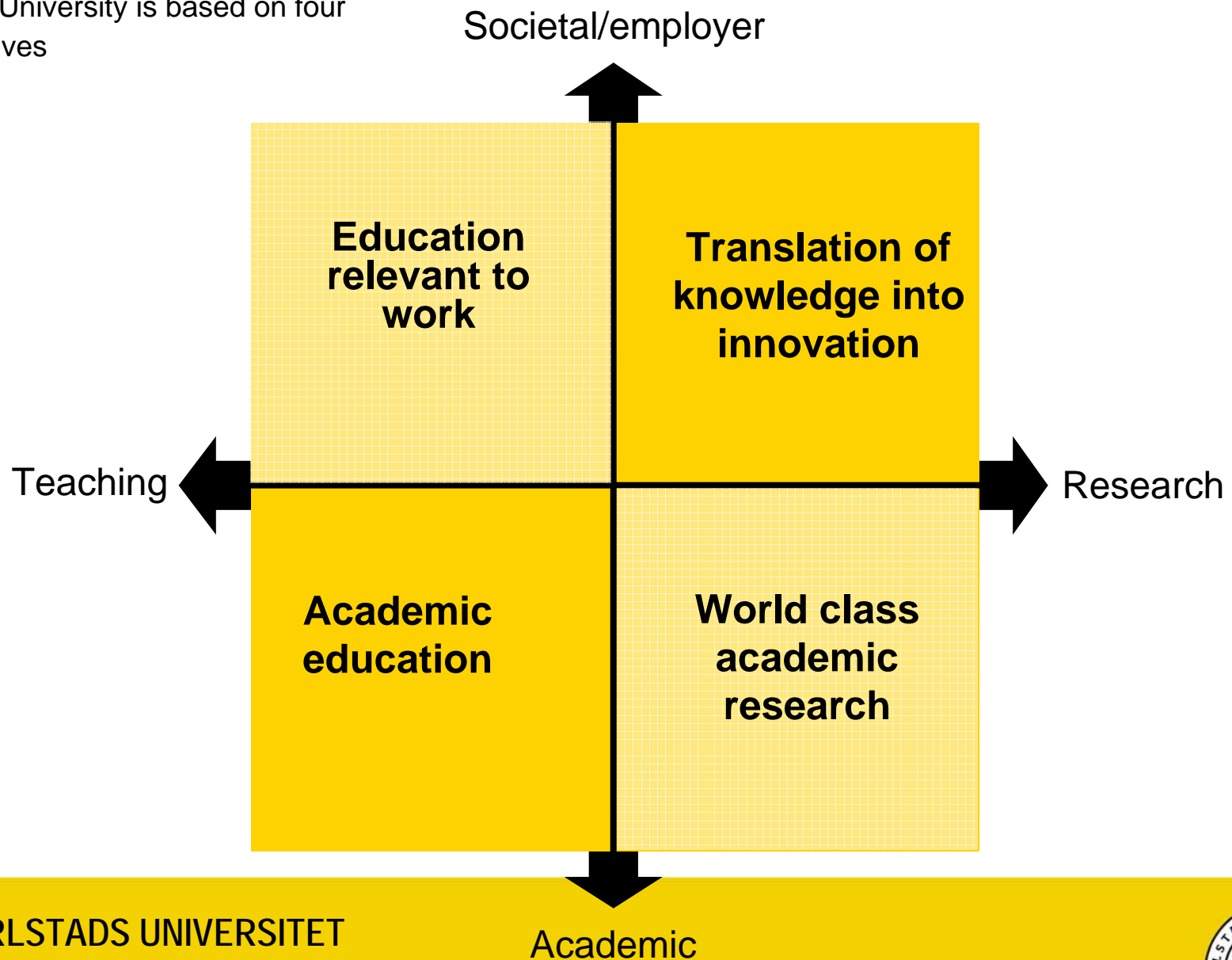
No, according to the OECD  
review performed during 2006

but

Good project examples



The Education and Research Strategy at Karlstad University is based on four perspectives

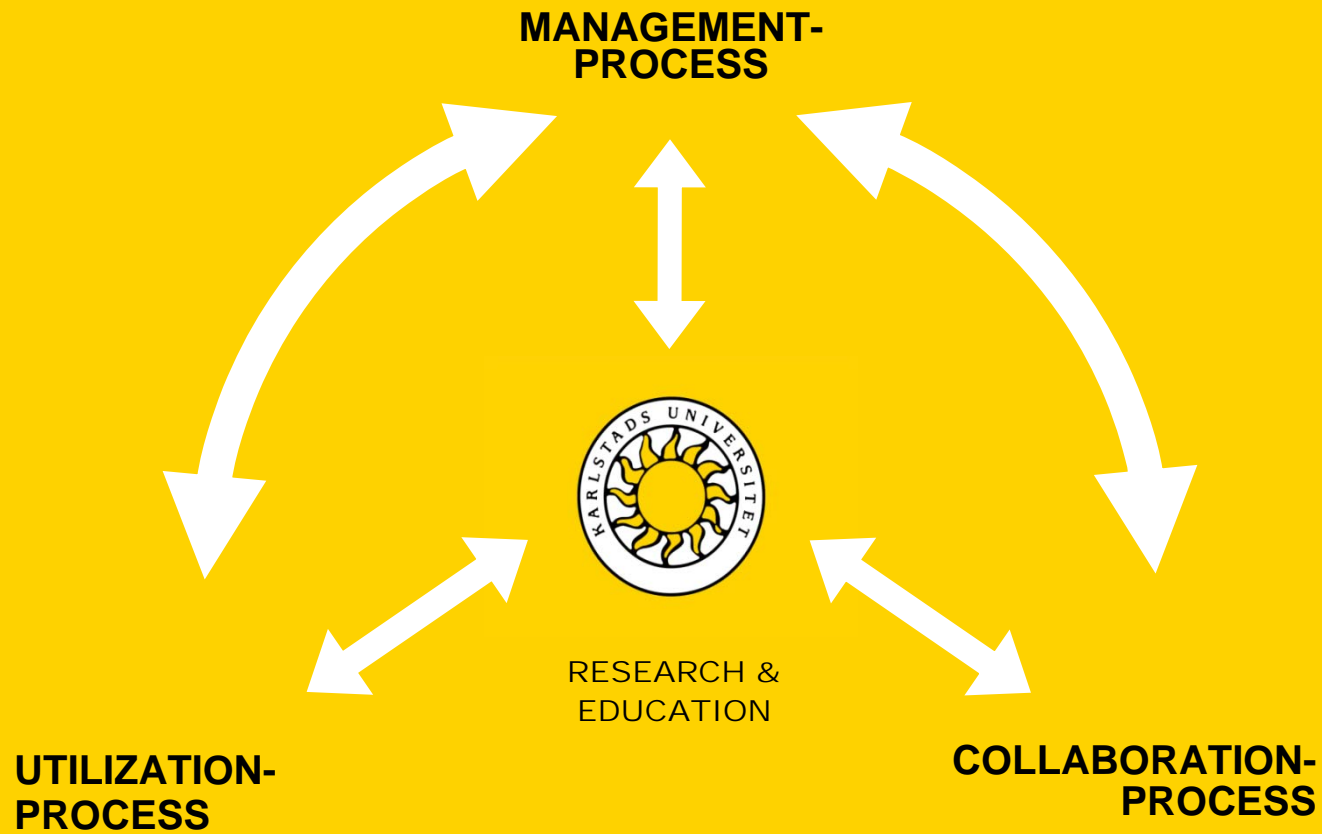


KARLSTADS UNIVERSITET

Academic



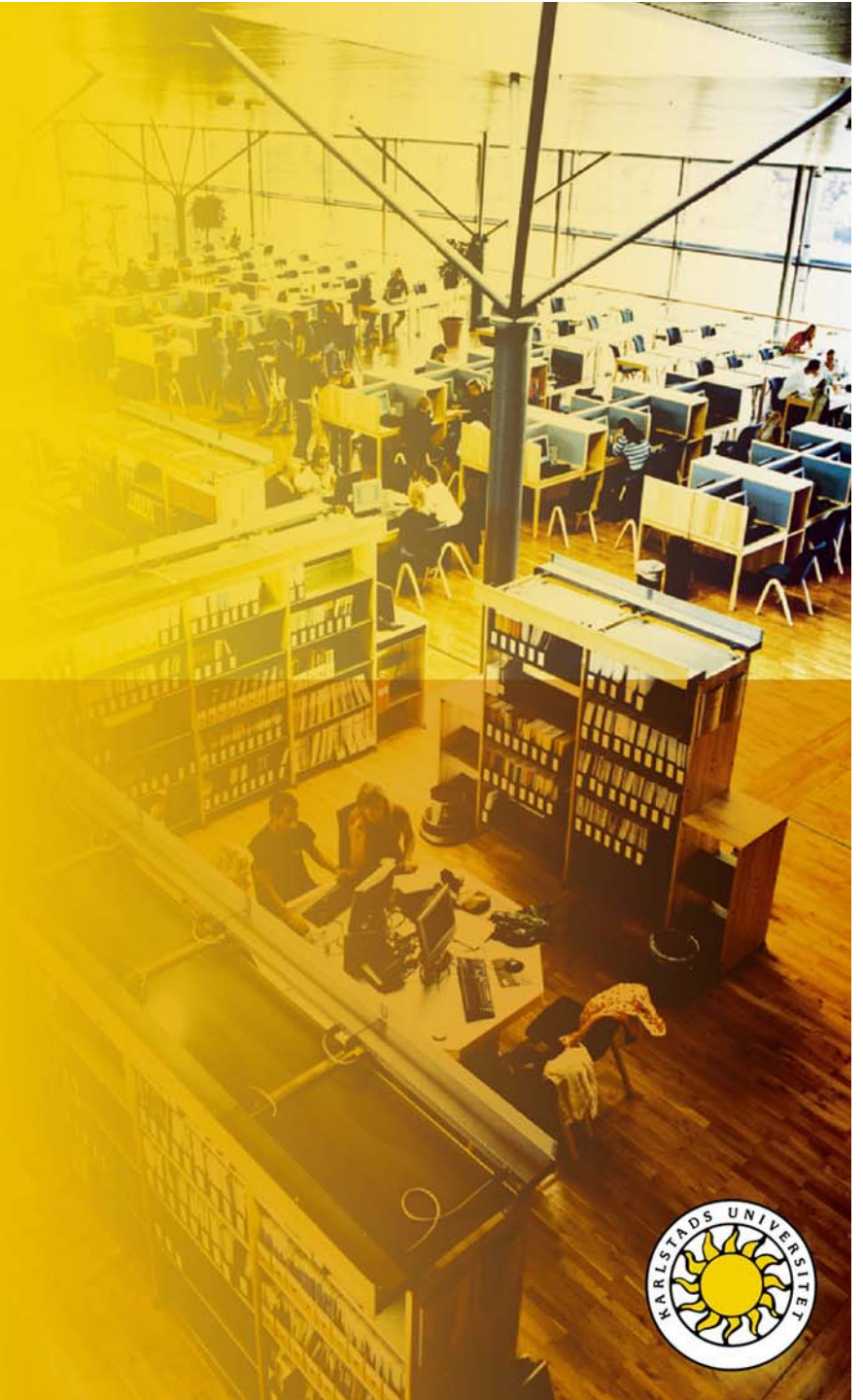
# Strategic development



Society and strategic partners



Three initiatives that develops the university within the main processes





# Ministry defined and sponsored projects

- Ministry of Enterprise (Key Actor Program)
  - Eight year (2008-2015) program financed by Vinnova
  - Develop the internal and external processes regarding utilization and collaboration, with focus regional actors including SMEs
  - Contains management and research leader competence development
- Ministry of Research and Education (Innovation Office)
  - Three year (2009-2011) initiative, long term ministry funding from 2012
  - Karlstad university in cooperation with three other young universities (Örebro, Mid Sweden and Linneaus) have established the innovation office “Four Leaf Clover”
  - Develop the innovation support process, extra focus on service innovations



# Memorandum of Understanding

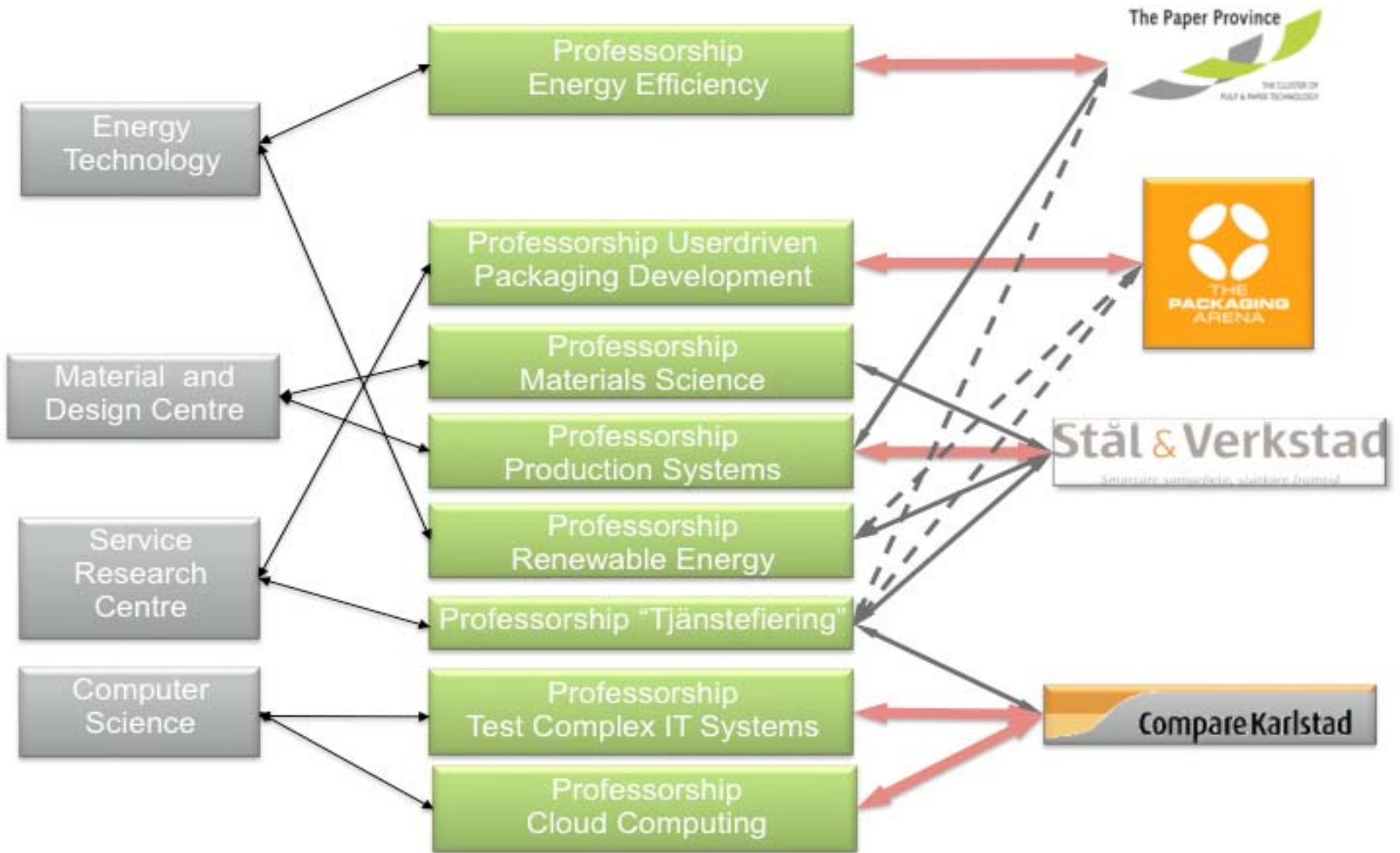
- 10 new professors
- > 10 000 000 Euro over five years
- Improved innovation capacity and entrepreneurship
- Improved matching between industry and research
- Improved capacity attracting external funding
- Improved capacity for regional analyses

The Ten Professors Program 2010 – 2014



KARLSTADS UNIVERSITET







# Other actions taken

Started to work with the university internal incentive systems;  
from 2011 we have included research cooperation into the national research fund distribution model

Established the "cluster room".

Figures, from mid 2009 until end of 2010:

- 182 meetings (approx four/week)
- 260 researchers involved
- 420 students
- 225 company representatives

Started a strategy program led by Region Värmland containing the clusters and the university, the goal is to develop a common development strategy (Värmlandmodel 2.0)



# Summary

The initiatives and actions contributes to the development within the processes and by that the development of the modern university

The modern university contributes to the development of the region and by that the nation

**MANAGEMENT-  
PROCESS**



RESEARCH &  
EDUCATION

**UTILIZATION-  
PROCESS**

**COLLABORATION-  
PROCESS**

Society and strategic partners



Are we progressing?

**YES !**





# Pure, (OECD review follow-up in 2010)

Statement from Steve Garlic (OECD, PURE):

I have not seen any other region in the world build a well functioning regional innovation system in such a short time frame as in Värmland

In the area of Regional Innovation Strategies, we witnessed a number of significant achievements both in terms of regional cluster organisations, and overall regional architecture to connect different strategic players, both locally and internationally.

The links between regional clusters and the University have developed substantially over the year.

In terms of the strategic relationship between region and Karlstad University, one of the most important achievements over the last 12 months is the prospective appointments of professors partly financed by the Region Värmland with close links with the clusters.

## Värmland förebild på möte om forskningssamarbete i Karlstad

European University Association, EUA (www.eua.be), arrangerade den 12-13 maj ett möte i Karlstad om forskningssamarbete.

Mötet är en del i ett arbete med workshops som arrangeras runt om i Europa för att samla och utbyta erfarenheter kring hur universiteten i Europa rustar sig för framtiden och hur man förändrar sitt sätt att samarbeta med näringsliv och andra aktörer.



Näringsdepartementet representerades av Åsa Minoz, projektledare för Innovationsstrategin och Anders Nyberg, politiskt sakkunnig.

-Det var ett mycket intressant möte som verkligen visar potentialen i lyckade samarbeten mellan universitet, näringsliv och offentliga aktörer inom regional och lokal utveckling. Inte minst var det intressant att höra mer om exemplen från Värmland. Det finns mycket att lära från deras arbete, sade Åsa Minoz efter mötet.

Mötet fokuserade bland annat på samarbetet mellan universitet och kluster.

På mötet deltog företrädare från olika europeiska lärosäten, från Karlstads Universitet, och från regionen och kluster som exempelvis Paper Province, Packaging Arena och klustret för Stål och Verkstad.

Under mötet framhöll bland annat Johan Goddard, professor i regional utveckling från universitetet i Newcastle (Storbritannien), att sättet samarbeta i Värmland mellan Karlstad Universitet, med näringsliv och lokala och regionala offentliga aktörer kring forskning och utbildning är ett föredöme för lärosäten runtom i Europa.

KARLSTADS UNIVERSITET



# View from the cluster companies

Measurements done by Regional Värmland within the SLIM-project (interregproject Värmland, Dalarna, Gävleborg) regarding the surrounding business sectors view on the cooperation with the university

Percentage of the cluster companies that cooperates with the university

2008 : 78%

2009 : 83%

Percentage of the cluster companies that would like to cooperate with the university

2008 : 94%

2009 : 97%





# Employee survey 2009

79% think that the strategies and work for being the modern university is important for the future

88% think that the university has a positive attitude towards interaction and collaboration

95% think that collaboration improves research

91% think that the research at Karlstad University contribute to social and/or business benefit

Resposn rate was 70%



Are we satisfied?

**NO !**



# Example of ongoing activities

Adding seminars in all education programs that addresses entrepreneurship and collaboration aspects

Developing mentorship programs for the students (business-contacts)

Establishing a PhD course that is about utilization of research, i.e. from research-funding application to research-result utilization (will be held in the autumn)

Developing a research leader program that will address how to strengthen the research both regarding collaboration and utilization

Developing a management course (for all Kau managers) with the same theme as the PhD-course

Developing cluster management and development courses that includes academy relation and cooperation (will be course modules for both industry/society and students)

Developing an utilizationmodel regarding service innovations (incl social innovations) that hopefully will be national acknowledged



**We are on a journey**

it is all about

**CULTURE & ATTITUDE CHANGES**

**within and outside the academy**





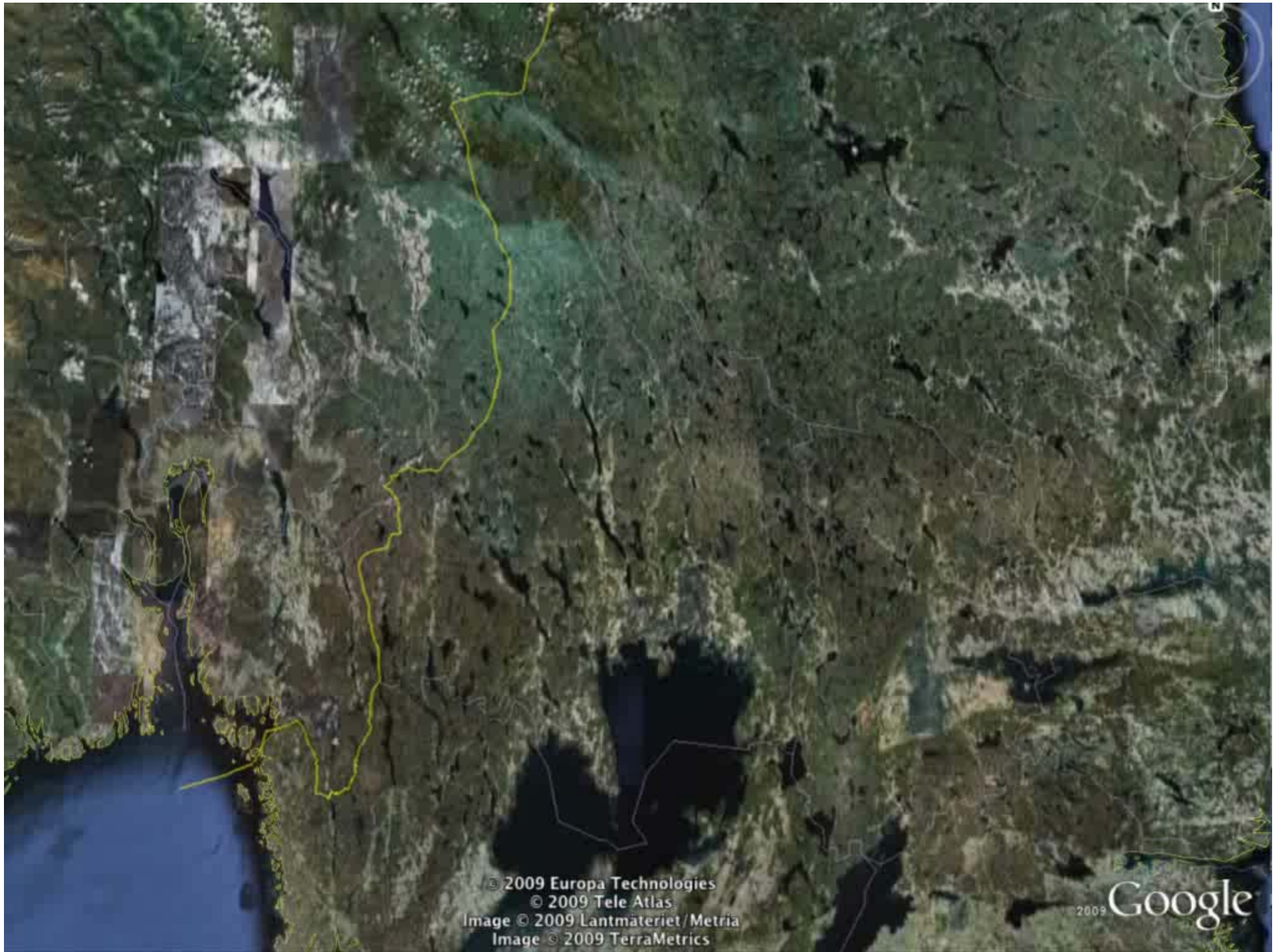
**The Paper Province**



THE CLUSTER OF  
PULP & PAPER TECHNOLOGY

A EUROPEAN WORLD-CLASS CLUSTER






© 2009 Europa Technologies  
© 2009 Tele Atlas  
Image © 2009 Lantmäteriet/Metria  
Image © 2009 TerraMetrics

2009 Google



A silhouette of a person with a backpack and trekking poles stands on a reflective surface, likely a frozen lake or snow, at sunset. The person is facing left, and their reflection is visible in the water below. The sky is a gradient of blue and orange, and the horizon is visible in the distance.

**Thank you for your attention!**

**Håkan Spjuth**

**+46 70-683 1040**

**[hakan.spjuth@kau.se](mailto:hakan.spjuth@kau.se)**

**[www.kau.se/gio](http://www.kau.se/gio)**

**Anders Olsson**

**+46 54 701 10 25**

**[anders.olsson@regionvarmland.se](mailto:anders.olsson@regionvarmland.se)**

**[www.regionvarmland.se](http://www.regionvarmland.se)**

Thank you for your attention!

